

DELUXE RANGE

2 Bay Modular Building 20ft x 16ft (6m x 4.8m)



All panels can be modified and moved to suit your requirements.



Modern yet functional space, ideal for a wide range of uses.



Different colour options are available on special order.

Our 2 bay modular building is great for all sorts of space requirements. All LCS' buildings come with double the amount of cross floor members as standard, giving you extra durability when needed.

LCS offer a turnkey solution when it comes to modular buildings, giving you the option to have as much or as least input as you require.

- Double floor cross members
- 60mm Polyurethane foam insulation with steel cladding (walls)
- 100mm mineral wool insulation (roof)
- 60mm mineral wool insulation with cement bound chipboard (floor)
- Vinyl laid flooring
- 4 tilt and turn upvc windows with shutters for added security
- 1 personnel door
- 4 strip lights
- 2 no 2kw convection heaters
- 4 double plug sockets
- Includes fascia
- In light grey (RAL7035)
*more colours available on special order

LCS
MODULAR
BUILDINGS



LCS Modular Buildings

LCS is an integral part of a larger business ecosystem owned by the Leavesley Group. We specialise in selling and renting modular buildings suitable for a broad range of applications.

Today, one of our core areas of expertise is selling and hiring modular buildings. We specialise in developing buildings for a range of industries, from education and healthcare to office buildings and retail outlets.

Our company was formed in the 1970's and was originally involved in the freight shipping business, operating out of its original location between Derby and Birmingham.



Vinyl laid flooring.



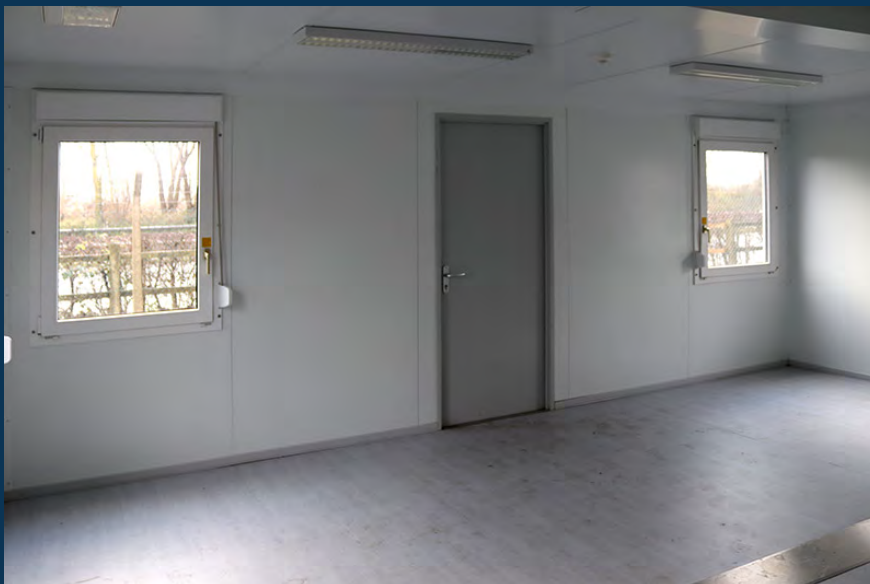
Windows include a tilt and turn mechanism as standard.



4 double plug sockets.



2kw convection heaters included.



LCS MODULAR BUILDINGS

T: 01283 204 729
E: info@lcsmodularbuildings.co.uk
W: www.lcsmodularbuildings.co.uk

LCS Modular Buildings
Lichfield Road,
Branston,
Burton Upon Trent
Staffordshire,
DE14 3HD